

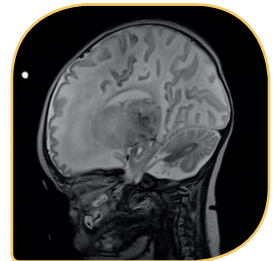


For a healthy
start in life



16-CHANNEL HEAD ARRAY COIL 1.5 / 3.0T

- 16-channel Array, cylindrical, receive only coil
- High-resolution MR brain scans of new and premature born babies up to approx. 3 months with head circumference of approx. 42cm
- Perfect for scanning intubated patients
- Improved SNR and image homogeneity: 35% increased SNR compared to 8-channel Array coil (e.g. Siemens Skyra)
- Extended field of view for head and throat scans: 17% enhanced field of view compared to 8-channel Array coil
- Compatible with
 - Siemens (VD, VE)
 - GE (DV 26)Further compatibilities are in progress
- Approved for use inside MR Diagnostics Incubator System nomag[®] IC **ADVANCED**



Kindly provided by:
Universitätsklinikum Tuebingen, Germany

Change of technical specification without notice